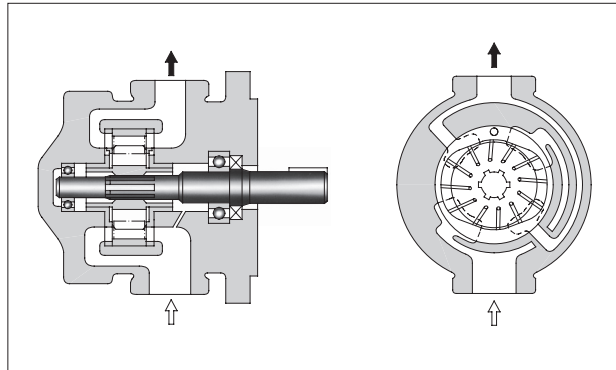
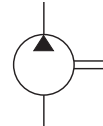


Single Vane Pumps

Offering stable performance and a wide range of output flow rates, it is widely used as a hydraulic actuation source.



Graphic Symbol



Specifications

Model Numbers	Geometric Displacement cm ³ /rev	Max. Operating Pressure MPa			Shaft Speed Range r/min		Approx. Mass kg						
		Petroleum Base Oils		Synthetic Fluids									
		Anti-Wear Type	R & O Type	Phosphate Esters	Max.	Min.	Foot Mtg.	Flange Mtg.					
50T- 7	6.8	7	7	7	2000 *	800	10.5	9.0					
50T-12	11.6												
50T-17	16.5												
50T-23	22.9												
50T-26	25.9												
50T-36	36.0												
150T- 48	47.7	7	7	7	1500 *	600	26	25					
150T- 61	61.1												
150T- 75	74.9												
150T- 94	93.6												
150T-116	115.6				7	7			7	1200	600	26	25

★ If phosphate esters are used, the maximum speed is limited to 1200 r/min.

● Consult Yuken for Single Vane Pump details.