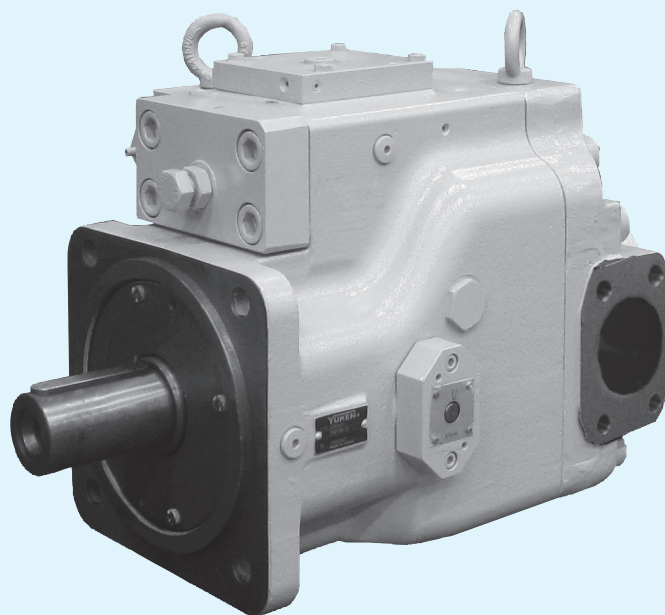

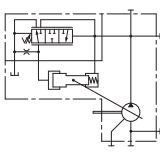


# A7H Series High Pressure Variable Displacement Piston Pumps



## ■ “A7H” Series High Pressure Variable Displacement Piston Pumps

Pump Type	Graphic Symbol	Geometric Displacement cm <sup>3</sup> /rev							Maximum Operating Pressure MPa	Page
		1	2	5	10	20	50	100		
 Series High Pressure Variable Displacement Piston Pumps	Single Pump★ 							A7H180 A7H265	40	A-205

★ The control type has three kinds of Pressure Compensator Type and Constant Power Control Type and Constant Power Control Type with External Pilot.

● Consult Yuken when material such as dimensions figures is required.

## AZHT Series High Pressure Variable Displacement Piston Pumps, Pressure Compensator Type

### Specifications

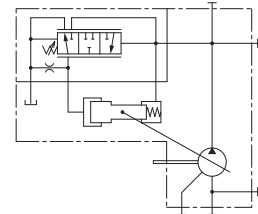
Model Numbers	Geometric Displacement cm <sup>3</sup> /rev	Operating Pressure MPa		Shaft Speed Range r/min	
		Rated	Intermittent	Rated	Max.*
A7H180- *R01S* * -11	180	35	40	1800	1900
A7H265- *R01S* * -11	270	35	40	1200	1600

\* Max. Allowable Shaft Speed is specified when the suction pressure is -0.01 MPa -.

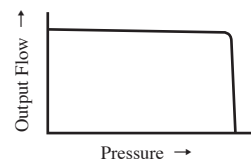
### Model Number Designation

A7H180	-F	R	01	S	N	A	-11
Series Number	Mounting	Direction of Rotation	Control Type	Port Position	Pipe Flange	Outboard Pump Mounting Type	Design Number
A7H180 (180 cm <sup>3</sup> /rev)	F: Flange Mtg.	(Viewed from Shaft End) R: Clockwise	01: Pressure Compensator Type (With Min. Flow Adj. Function)	S: Side Port	None: With Pipe Flange N: Without Pipe Flange	None: Without Mounting (With End Cover) A: SAE A B: SAE B C: SAE C CC: SAE CC D: SAE D	11
A7H265 (270 cm <sup>3</sup> /rev)	L: Foot Mtg.	R: Clockwise					

Graphic Symbol



Performance Characteristics



## AZHT Series High Pressure Variable Displacement Piston Pumps, Constant Power Control Type

### Specifications

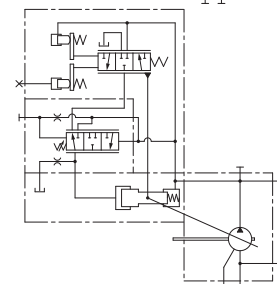
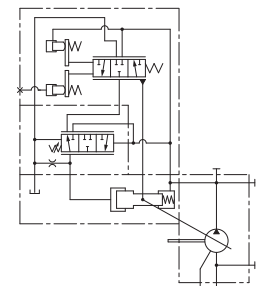
Model Numbers	Geometric Displacement cm <sup>3</sup> /rev	Operating Pressure MPa		Shaft Speed Range r/min	
		Rated	Max.*	Rated	Max.*
A7H180- *R09* * * * -11	180	35	40	1800	1900
A7H265- *R09* * * * -11	270	35	40	1200	1600

\* Max. Allowable Shaft Speed is specified when the suction pressure is -0.01 MPa -.

### Model Number Designation

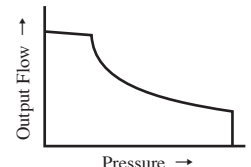
A7H180	-F	R	09	R	S	N	A	-M1	-11
Series Number	Mounting	Direction of Rotation	Control Type	External Pilot	Port Position	Pipe Flange	Outboard Pump Mounting Type	Code of Constant Power Control Type	Design Number
A7H180 (180 cm <sup>3</sup> /rev)	F: Flange Mtg.	(Viewed from Shaft End) R: Clockwise	09: Constant Power Control Type (With Min. Flow Adj. Function)	None: Without External Pilot R: With External Pilot	S: Side Port	None: With Pipe Flange N: Without Pipe Flange	None: Without Mounting (With End Cover) A: SAE A B: SAE B C: SAE C CC: SAE CC D: SAE D	Refer to Below Code Table	11
A7H265 (270 cm <sup>3</sup> /rev)	L: Foot Mtg.	R: Clockwise							

Graphic Symbols



09R (With External Pilot)

Performance Characteristics



### Code Table of Constant Power Control Type

<A7H180>					<A7H265>			
Motor power kW	970 r/min	1150 r/min	1450 r/min	1750 r/min	Motor power kW	970 r/min	1150 r/min	1450 r/min
30	M4	-	-	-	45	M5	-	-
37	M2	M3	-	-	55	M3	M5	-
45	M0	M2	M4	-	75	H3	M1	M4
55	H3	M0	M2	M4	90	H2	H3	M2
75	-	H1	MA	M1	110	-	H1	H4
90	-	-	H2	MA	132	-	-	H2
110	-	-	-	H2				