

# Remote Control Relief Valves

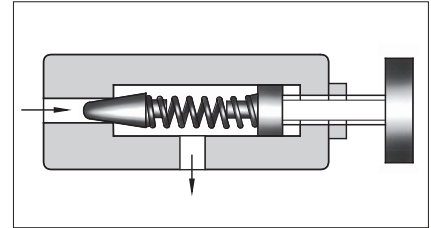
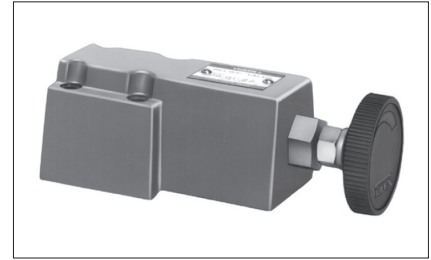
This valve is used as a remote control valve for pilot operated type pressure control valves.

## Specifications

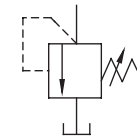
| Model Numbers       |                    | Max. Operating Pressure MPa | Approx. Mass kg |         |
|---------------------|--------------------|-----------------------------|-----------------|---------|
| Threaded Connection | Sub-plate Mounting |                             | DT Type         | DG Type |
| DT-01-22            | DG-01-22           | 25                          | 1.6             | 1.4     |

## Model Number Designation

| D                                | T                       | -01        | -22           |
|----------------------------------|-------------------------|------------|---------------|
| Series Number                    | Type of Mounting        | Valve Size | Design Number |
| D : Remote Control Relief Valves | T : Threaded Connection | 01         | 22            |
|                                  | G : Sub-plate Mounting  |            | 22            |



Graphic Symbol



## Accessories

### Mounting Bolts

| Valve Model Numbers | Socket Head Cap Screw |
|---------------------|-----------------------|
| DG-01               | M5x45L.....4 Pcs.     |

### Sub-plate

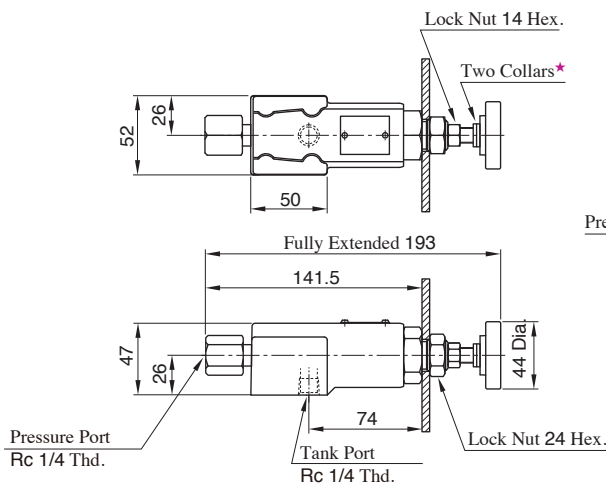
| Valve Model Numbers | Sub-plate Model Numbers | Thread Size Rc | Approx. Mass kg |
|---------------------|-------------------------|----------------|-----------------|
| DG-01               | DGM-02-20               | 1/4            | 0.7             |

- Sub-plates are available. Specify the sub-plate model number from the table above. When sub-plates are not used, the mounting surface should have a good machined finish. (√6/)

## Instructions

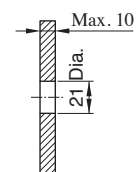
- To adjust the pressure, loosen the lock nut and turn the handle slowly clockwise for higher pressures or anti-clockwise for lower pressures. After adjustments, do not forget to tighten the lock nut.
- If the internal volume of the vent line is too large, chattering is likely to occur, so please use the pipes with 4mm inside diameter.
- Piping of the tank line should not be connected to any tank line of the other valves, but connected directly to the reservoir.
- In case of using for vent control, if pilot relief valve fully closed, the pressure of system is equal to the setting pressure of main valve.

## DT-01



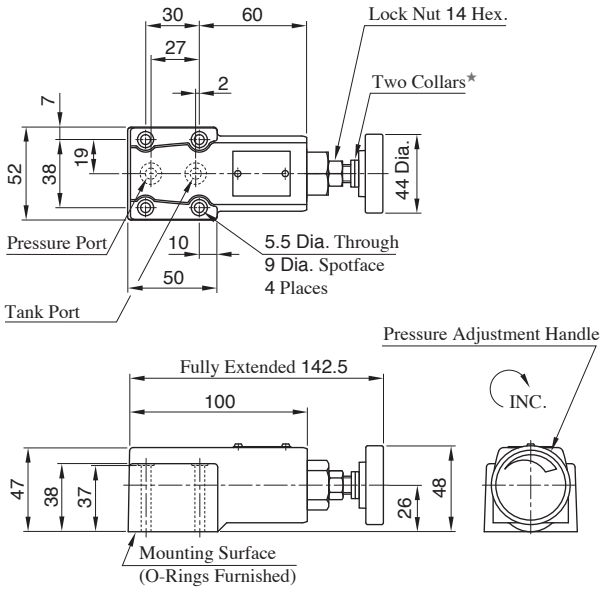
★ Pressure is limited by collars fitted. If a working pressure cannot be attained, remove some collars. One collar is equivalent to 10 MPa.

Dimensions of The Panel Mounting Hole

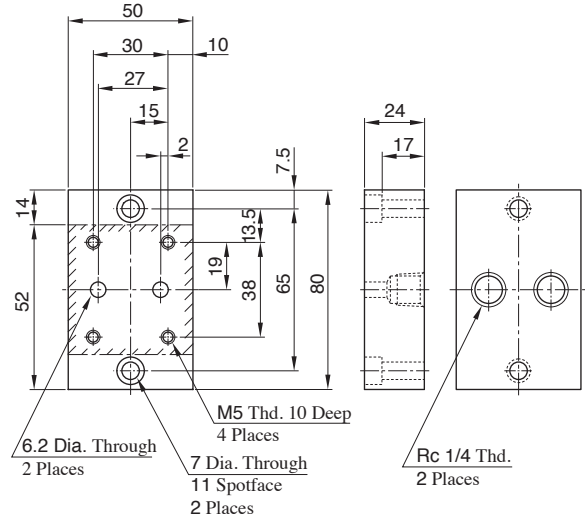


**DG-01**

★ Pressure is limited by collars fitted. If a working pressure cannot be attained, remove some collars. One collar is equivalent to 10 MPa.

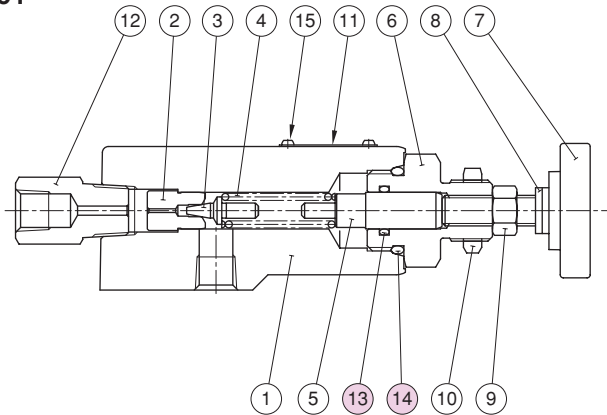


**Sub-plate : DGM-02**



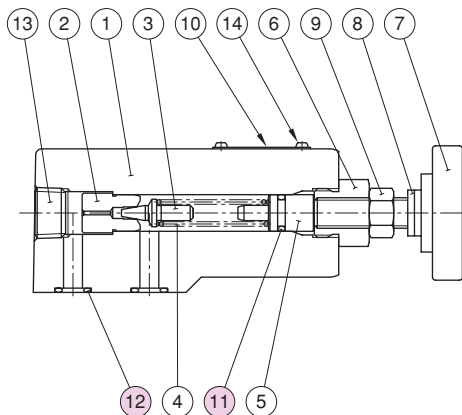
**List of Seals**

**DT-01**



| Item | Name of Parts | Part Numbers      | Qty. |
|------|---------------|-------------------|------|
| 13   | O-Ring        | OR NBR-70-1 P12-N | 1    |
| 14   | O-Ring        | OR NBR-90 P22.4-N | 1    |

**DG-01**



| Item | Name of Parts | Part Numbers     | Qty. |
|------|---------------|------------------|------|
| 11   | O-Ring        | OR NBR-70-1 P9-N | 1    |
| 12   | O-Ring        | OR NBR-90 P9-N   | 2    |

# Direct Type Relief Valves

This valve is used in a hydraulic circuit to prevent damage due to over pressure and to adjust the maximum circuit pressure of small capacity.

## Specifications

| Model Numbers       |                    | Max. Operating Pressure MPa | Pres. Adj. Range MPa | Max. Flow L/min | Approx. Mass kg |         |
|---------------------|--------------------|-----------------------------|----------------------|-----------------|-----------------|---------|
| Threaded Connection | Sub-plate Mounting |                             |                      |                 | DT Type         | DG Type |
| DT-02-* -22         | DG-02-* -22        | 21                          | ★                    | 16              | 1.5             | 1.5     |

★ Refer to the model number designation.

## Model Number Designation

| D                             | T                       | -02        | -B                         | -22           |
|-------------------------------|-------------------------|------------|----------------------------|---------------|
| Series Number                 | Type of Mounting        | Valve Size | Pres. Adj. Range           | Design Number |
| D : Direct Type Relief Valves | T : Threaded Connection | 02         | B : ★ - 7                  | 22            |
|                               | G : Sub-plate Mounting  |            | C : 3.5 - 14<br>H : 7 - 21 | 22            |

★ Refer to the minimum adjustment pressure characteristics.

## Instructions

- To adjust the pressure, loosen the lock nut and turn the handle slowly clockwise for higher pressures or anti-clockwise for lower pressures. After adjustments, do not forget to tighten the lock nut.
- Piping of the tank line should not be connected to any tank line of the other valves, but connected directly to the reservoir.

## Accessories

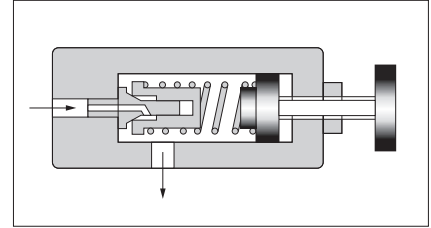
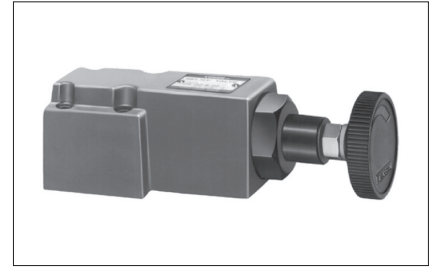
### Mounting Bolts

| Valve Model Numbers | Socket Head Cap Screw |
|---------------------|-----------------------|
| DG-02               | M5×45L.....4 Pcs.     |

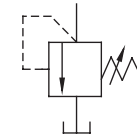
## Sub-plate

| Valve Model Numbers | Sub-plate Model Numbers | Thread Size Rc | Approx. Mass kg |
|---------------------|-------------------------|----------------|-----------------|
| DG-02               | DGM-02-20               | 1/4            | 0.7             |

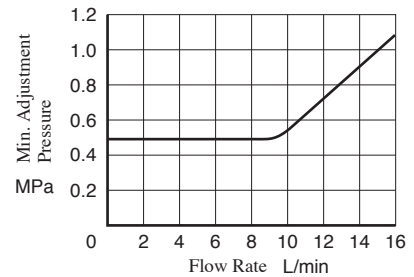
- Sub-plates are available. Specify the sub-plate model number from the table above. When sub-plates are not used, the mounting surface should have a good machined finish. ( $\sqrt[1.6]{}$ )
- The sub-plates are those for remote control relief valves. For dimensions, see page C-4.



Graphic Symbol

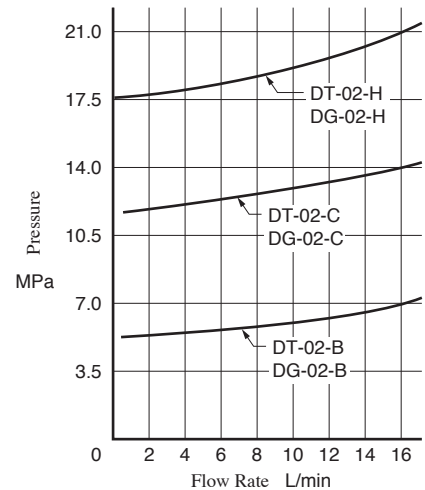


## Min. Adjustment Pressure

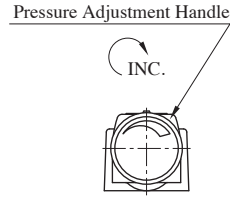
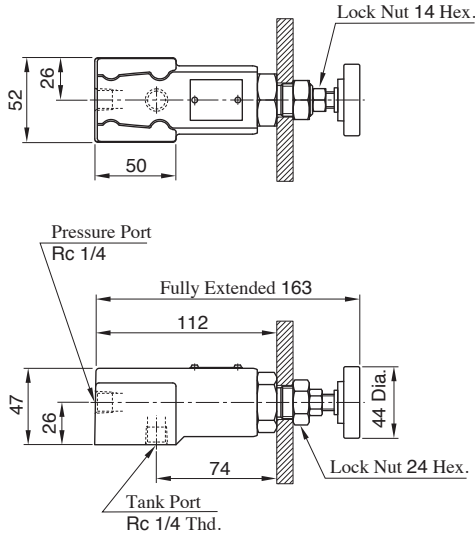


## Nominal Override Characteristics

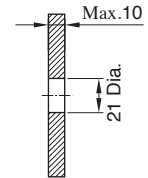
Hydraulic fluid  
Viscosity : 35 mm<sup>2</sup>/s  
Specific Gravity : 0.850



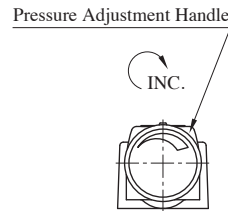
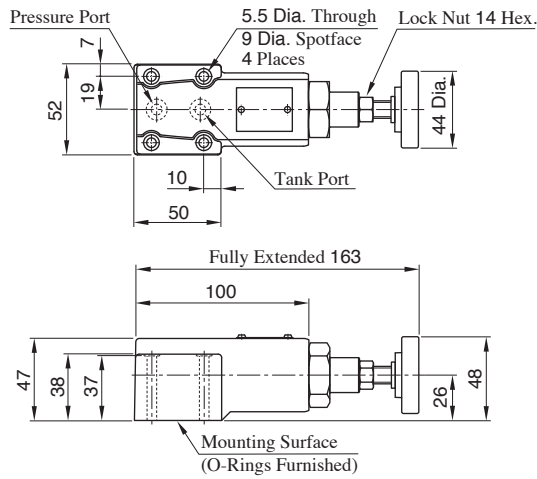
**DT-02**



**Dimensions of The Panel  
Mounting Hole**



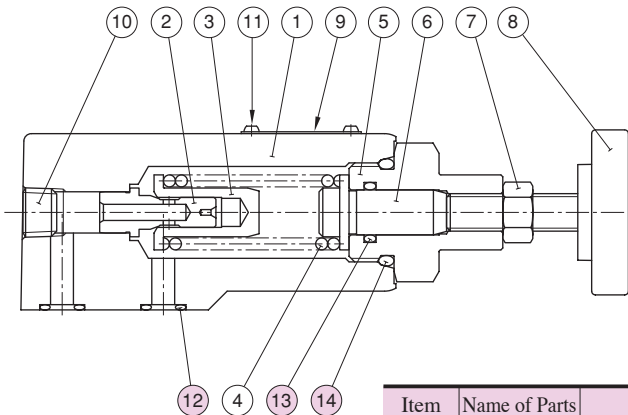
**DG-02**



Note: For dimensions of the valve mounting surface, see the dimensional drawing (page C-4) of the sub-plate used together.

**List of Seals**

**DT-02  
DG-02**



| Item | Name of Parts | Part Numbers      | Qty. | Remarks            |
|------|---------------|-------------------|------|--------------------|
| 12   | O-Ring        | OR NBR-90 P9-N    | 2    | Use only for DG-02 |
| 13   | O-Ring        | OR NBR-70-1 P12-N | 1    |                    |
| 14   | O-Ring        | OR NBR-90 P22.4-N | 1    |                    |