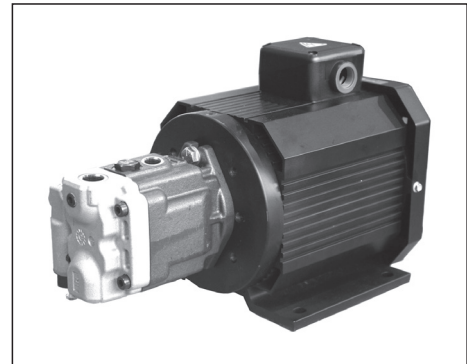


AML1 Type Motor-Pumps

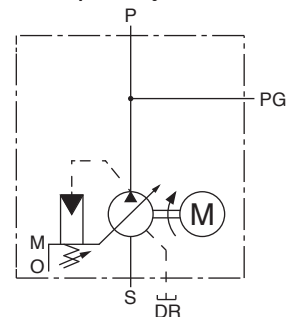
This motor-pump is ARL1 series piston pump integrated with electric motor. Use as auxiliaries / spare parts for YA-Light, make it compact by applicable design of motor-pumps.



Specifications

Model Numbers	Geometric Displacement cm ³ /rev	Max. Operating Pres. Rated Pres.	Electric Motor	Mass kg
AML1-6*-*-20	6.2	7 MPa Differ by operating conditions, please contact us separately for details.	0.75 kW×4P	23
			1.5 kW×4P	26.3
			2.2 kW×4P	37
AML1-8*-*-20	8.5		0.75 kW×4P	23
			1.5 kW×4P	26.3
			2.2 kW×4P	37
AML1-12*-*-20	12.3		1.5 kW×4P	26.3
			2.2 kW×4P	37
AML1-16*-*-20	16.3		1.5 kW×4P	26.3
			2.2 kW×4P	37

Graphic Symbol



★Displacement volume adjustment function is not available.

Electric Motor Specifications

Output × Poles	Insulation Type	Voltage - Frequency V Hz	Rated Current A	Rotation Speed r/min	Inrush Current A	Coating Structure / Surrounding Environment
0.75 kW×4P	F	200-50	3.50	1460	21.8	<ul style="list-style-type: none"> ●Coating Structure Dust & Splash Proof / Coating Surface Self Cooling Type (IP54 IC411, IEC60034-1) ●Surrounding Environment Location : Indoor Temperature : -20 - +40°C Humidity : Relative Humidity below 80%, No Condensation Elavation : Below 1000 m Corrosive Gas / Explosive Gas / Steam not exist
		200-60	3.45	1750	19.6	
		220-60	3.30	1760	21.9	
1.5 kW×4P		200-50	6.40	1450	39.8	
		200-60	6.60	1760	37.0	
		220-60	5.90	1756	39.0	
2.2 kW×4P		200-50	9.50	1450	64.0	
		200-60	9.00	1740	56.0	
			220-60	8.50	1750	

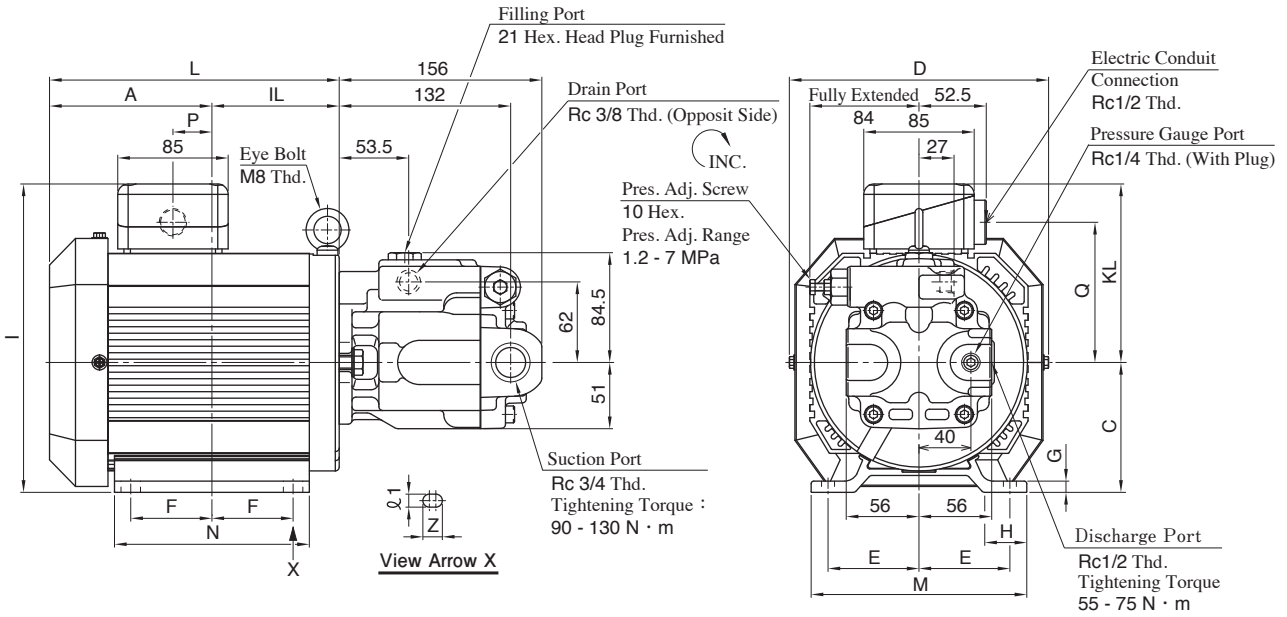
Model Number Designation

AML1	-16	A	-1.5	-20
Series Number	Geometric Displacement	Mounting Type	Electric Motor	Design Number
AML1 : AML1 Type Motor-Pumps	6 : 6.2 cm ³ /rev 8 : 8.5 cm ³ /rev	S : Side Port (Standard) A : Suction Port Position: Downwards (For Standard L Pack)	0.75 : 0.75 kW×4P 1.5 : 1.5 kW×4P 2.2 : 2.2 kW×4P	20
	12 : 12.3 cm ³ /rev 16 : 16.3 cm ³ /rev		1.5 : 1.5 kW×4P 2.2 : 2.2 kW×4P	

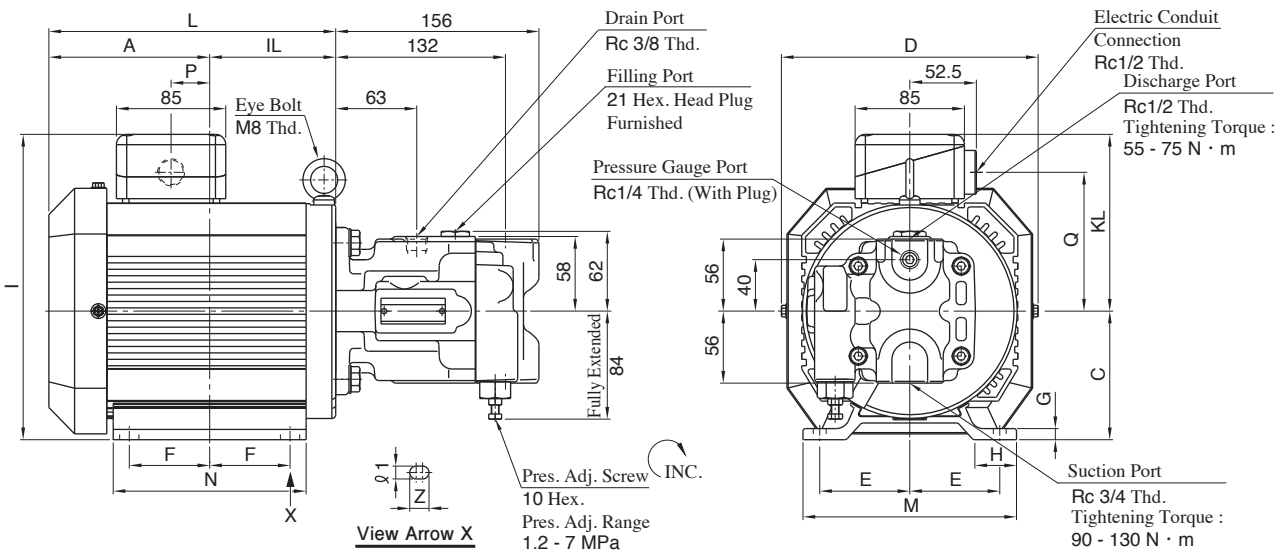
Pump Characteristics

For pump characteristics, please refer to those of ARL1 series piston pump on ["A Piston Pump"Catalog].

AML1- * S (Side Port)



AML1- * A (Suction Port Downwards)



Model Numbers	Electric Motor Output × Poles	A	IL	C	D	E	F	G	H	I	M
AML1- * *-0.75	0.75 kW×4P	108	85.5	100	200	70	50	8.7	32.4	234	166
AML1- * *-1.5	1.5 kW×4P	125.5	98	100	200	70	62.5	8.7	32.4	234	166
AML1- * *-2.2	2.2 kW×4P	139	114.5	110	218	95	70	10.7	59	254	220

Model Numbers	Electric Motor Output × Poles	N	KL	Q	Z	ℓ 1	L	P
AML1- * *-0.75	0.75 kW×4P	125	134	108	15	10	193.5	12.5
AML1- * *-1.5	1.5 kW×4P	150	134	108	15	10	223.5	30
AML1- * *-2.2	2.2 kW×4P	185	144	118	15	12	253.5	42.5

★Electric motor for this motor-pump is not available for single sale. If spare parts required, please order as motor-pumps.

■ Interchangeability between Current and New Models

As of AML1 type motor pump, the design number has changed from 10 to 20 due to change of built-in electric motor.

● Major Changes

- (1) Mass has been increased in the range of 1.5 - 9.7 kg (Mass ratio 106 - 136%)
- (2) The body has become larger in general.
- (3) Built-in electric motor efficiency class has changed to IE3. Motor specifications have been upgraded in general.

● Interchangeability in Installation

No interchangeability. The following dimensions are different.

Non-interchangeable Element Description	Non-interchangeable Element Dimension
Distance from pump position to center of electric motor	Next Page Dimension IL
Pump Center Height	Next Page Dimension C
Mounting Position of Electric Motor	Next Page Dimension E, F, ℓ 1 [Only for AML1-**-2.2]

● Comparison of Current and New Specifications

New specifications are the same as current except for those listed below. Mass has been increased in the range of 1.5 - 9.7 kg (Mass ratio 106 - 136%)

① Mass

Model Numbers	Mass kg
AML1-**-0.75	23 (19.8)
AML1-**-1.5	26.3 (24.8)
AML1-**-2.2	37 (27.3)

★The values without parentheses represent the mass of new 20 design, those in parentheses represent the mass of current 10 design.

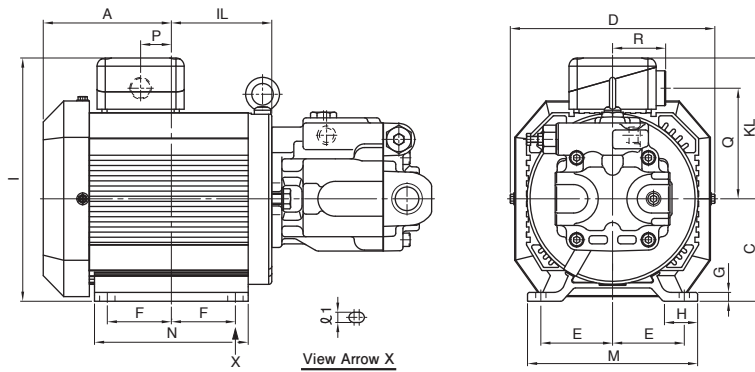
② Electric Motor

Output × Poles	Voltage - Frequency V Hz	Rated Current A	Rotation Speed r/min	Inrush Current A
0.75 kW×4P	200-50	3.50 (3.70)	1460 (1410)	21.8 (17.0)
	200-60	3.45 (3.40)	1750 (1700)	19.6 (15.5)
	220-60	3.30 (3.35)	1760 (1720)	21.9 (17.5)
1.5 kW×4P	200-50	6.40 (6.30)	1450 (1410)	39.8 (34.5)
	200-60	6.60 (6.00)	1760 (1700)	37.0 (30.0)
	220-60	5.90 (5.60)	1756 (1720)	39.0 (33.6)
2.2 kW×4P	200-50	9.50 (9.60)	1450 (1410)	64.0 (49.5)
	200-60	—	1740 (1700)	56.0 (44.5)
	220-60	—	1750 (1720)	64.0 (50.2)

★The values without parentheses represent the specifications of new 20 design, in parentheses represent those of current 10 design.

■ Comparison of Current and New Dimensions

New dimensions are the same as current except for those in the chart below.



Model Numbers		A	IL	C	D	E	F	G	H	I	M
Current	AML1-**-0.75-10	128.5	65	90	192			8	—	228	
	AML1-**-1.5-10	146.2	77.5	90	192			8	—	228	
	AML1-**-2.2-10	176	77.5	90	192	70	62.5	8	—	228	166
New	AML1-**-0.75-20	108	85.5	100	200			8.7	32.4	234	
	AML1-**-1.5-20	125.5	98	100	200			8.7	32.4	234	
	AML1-**-2.2-20	139	114.5	110	218	95	70	10.7	59	254	220

Model Numbers		N	KL	Q	ℓ 1	P	R
Current	AML1-**-0.75-10		138	105		18	51.5
	AML1-**-1.5-10		138	105		35.5	51.5
	AML1-**-2.2-10	150	138	105	10	65.5	51.5
New	AML1-**-0.75-20		134	108		12.5	52.5
	AML1-**-1.5-20		134	108		30	52.5
	AML1-**-2.2-20	185	144	118	12	42.5	52.5