

Throttle Module / Throttle and Check Module

Used as pilot choke valves for solenoid controlled pilot operated directional valves and pilot operated directional valves.

Specifications

Model Numbers	Nominal Flow L/min	Max. Operating Pressure MPa	Mass kg
TC1G-01-40	30	25	0.6
TC2G-01-40			0.65
TC1G-03-* -40	80		1.6
TC2G-03-* -40			1.8

Model Number Designation

TC1	G	-03	-C	-40
Series Number	Type of Mounting	Valve Size	Valve Type	Design Number
TC1 : Throttle Module TC2 : Throttle and Check Module	G : Gasket Mounting	01	—	40
TC1 : Throttle Module			None : Std. C : With Check Valve A : Meter-In	
TC1 : Throttle and Check Module		03		None : Std. (Meter-Out)
			None : Std. (Meter-In)	

Mounting Bolts

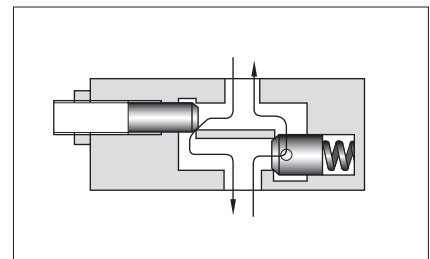
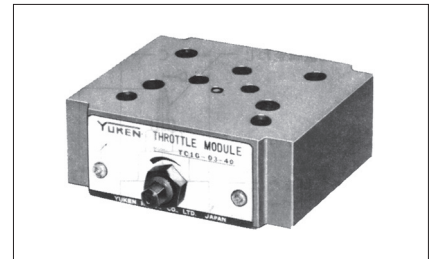
If mounting bolts are necessary, order suitable ones selected from the table below. If mounting bolts from other companies are used, their strength must be 8.8 or up JIS B1176 standards.

Solenoid Operated Directional Valve	Socket Head Cap Screw	
	TC *G-01	TC *G-03
	M5×70L (4pcs.)	M6×70L (4pcs.)
	M5×95L (4pcs.)	M6×100L (4pcs.)

Instructions

Flow Adjustment

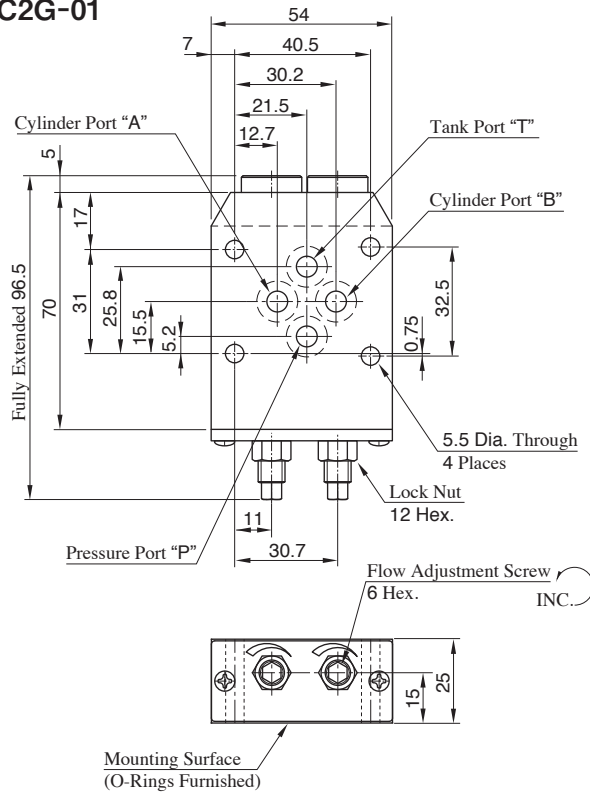
Loosen the lock nut and turn the flow adjustment handle clockwise to increase. After adjustment, be sure to tighten the lock nut.



Graphic Symbols

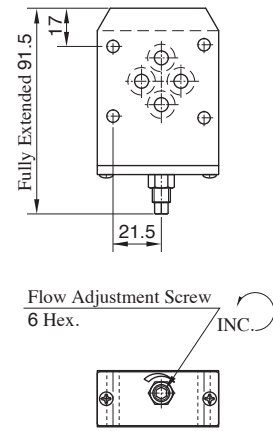
Valve Size 01	Valve Size 03
<p>TC1G-01-40</p>	<p>TC1G-03-40</p>
—	<p>TC1G-03-C-40</p>
<p>TC2G-01-40</p>	<p>TC2G-03-40</p>
—	<p>TC2G-03-A-40</p>

TC2G-01



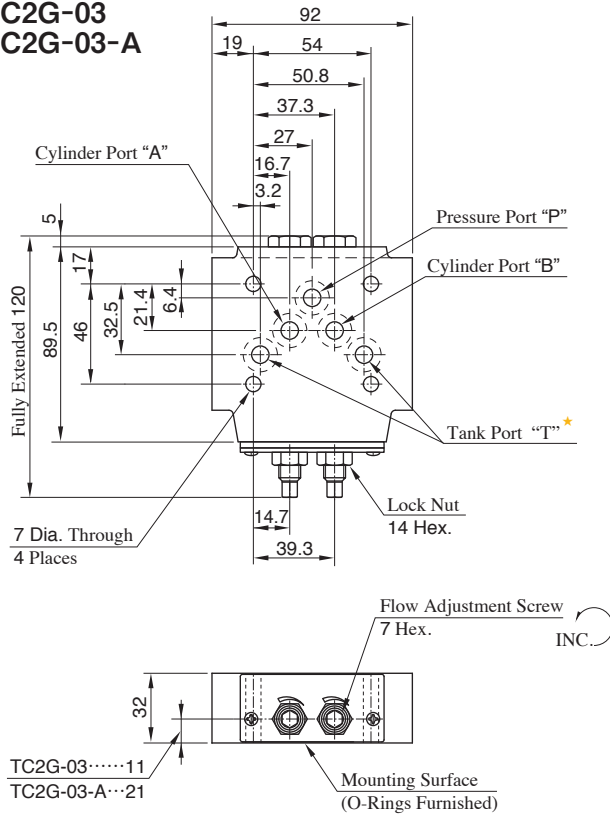
Mounting Surface : ISO 4401-03-02-0-05

TC1G-01



For other dimensions, see the figures shown TC2G-01.

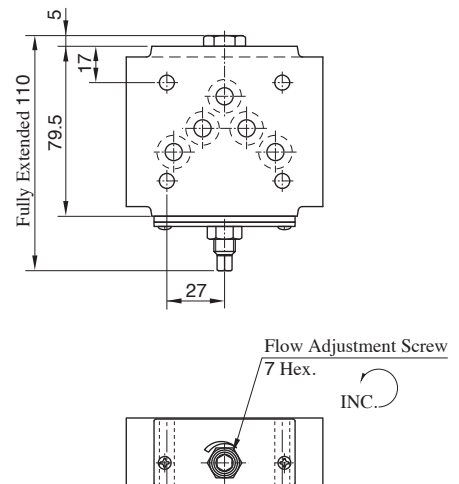
TC2G-03
TC2G-03-A



★ With standard sub-plate, the left one of the two tank ports "T" is used but either one may be used.

Mounting Surface : ISO 4401-05-04-0-05

TC1G-03
TC1G-03-C

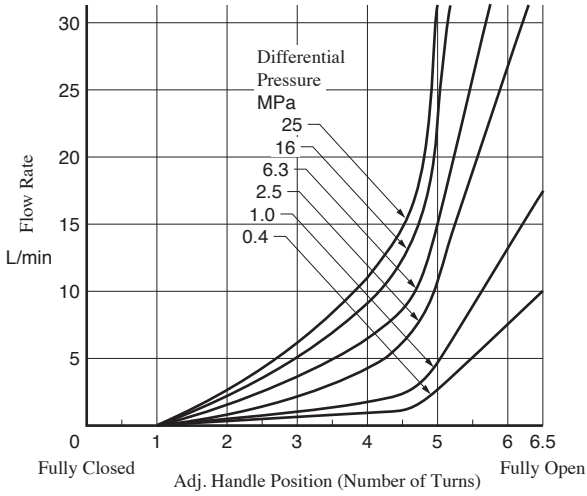


For other dimensions, see the figures shown TC2G-03.

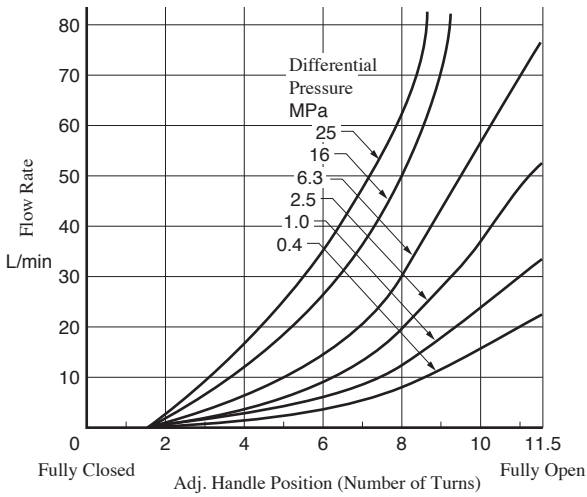
Adjustment Handle Position vs. Flow

Viscosity : 35 mm²/s

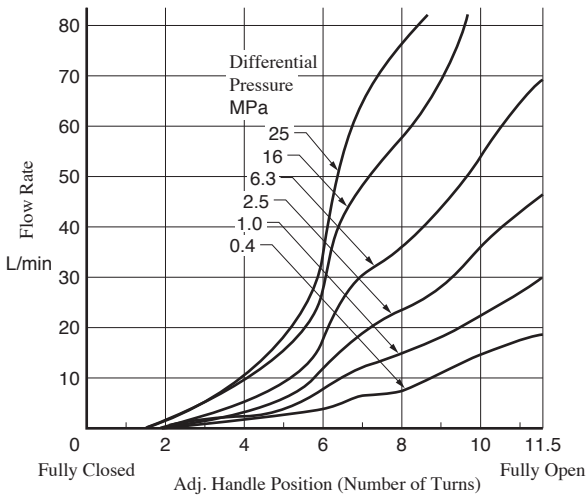
**TC1G-01
TC2G-01**



**TC1G-03
TC2G-03**



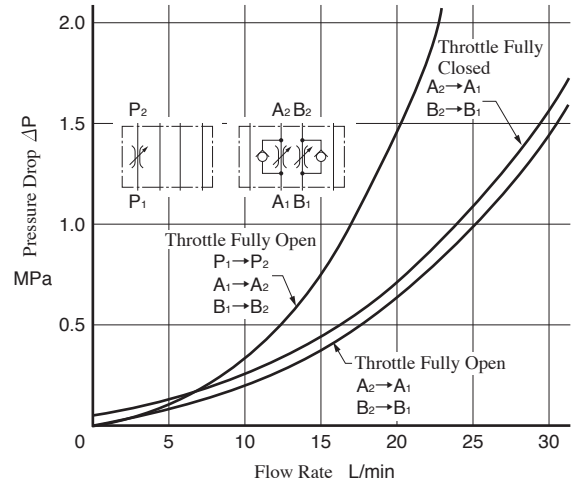
TC1G-03-C



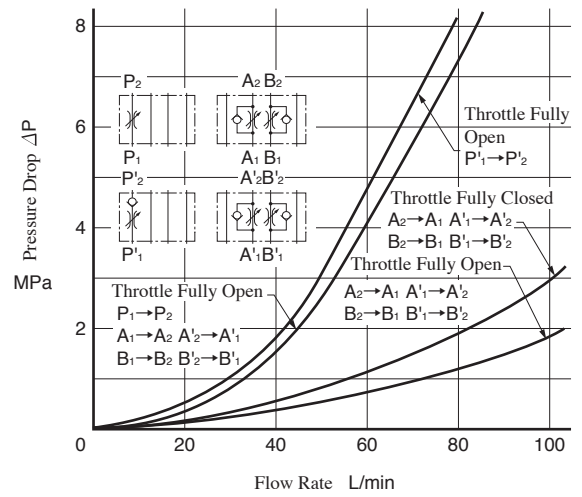
Pressure Drop

Viscosity : 35 mm²/s

**TC1G-01
TC2G-01**



**TC1G-03- *
TC2G-03- ***



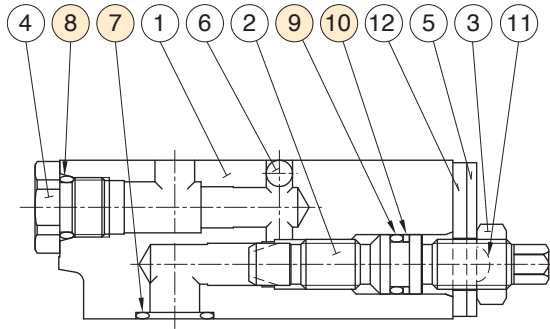
● For any other viscosity, multiply the factors in the table below.

Viscosity mm ² /s	15	20	30	40	50	60	70	80	90	100
Factor	0.81	0.87	0.96	1.03	1.09	1.14	1.19	1.23	1.27	1.30

● Please use $\Delta P' = \Delta P \frac{G'}{G}$ for specific gravity change. However, ΔP is the value in the diagram and G is 0.850.

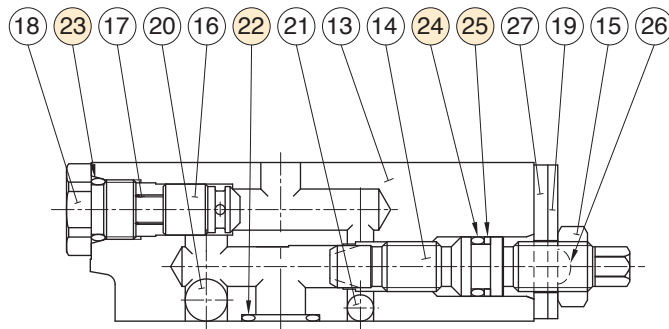
List of Seals

TC1G-01, 03



Item	Name of Parts	Part Numbers		Qty.	
		TC1G-01	TC1G-03	TC1G-01	TC1G-03
7	O-Ring	OR NBR-90 P9-N	AS 568-014 (NBR-90)	4	5
8	O-Ring	—	OR NBR-90 P10-N	—	1
9	O-Ring	OR NBR-70-1 P7-N	OR NBR-70-1 P9-N	1	1
10	Back Up Ring	BR JIS B 2401-4-T2-P7	BR JIS B 2401-4-T2-P9	1	1

TC2G-01, 03



Item	Name of Parts	Part Numbers		Qty.	
		TC2G-01	TC2G-03	TC2G-01	TC2G-03
22	O-Ring	OR NBR-90 P9-N	AS 568-014 (NBR-90)	4	5
23	O-Ring	OR NBR-90 P10-N	OR NBR-90 P10-N	2	2
24	O-Ring	OR NBR-70-1 P7-N	OR NBR-70-1 P9-N	2	2
25	Back Up Ring	BR JIS B 2401-4-T2-P7	BR JIS B 2401-4-T2-P9	2	2