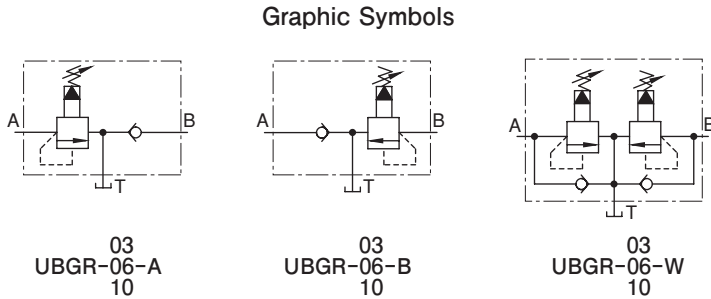
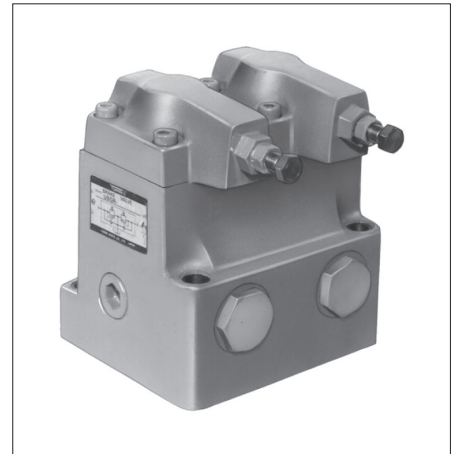


Brake Valves

Brake valves are used on hydraulic cylinders and in brake circuits of hydraulic motors. They can brake with any pressure, permitting smooth stopping.



Specifications

Model Numbers	Max. Operating Pres. MPa	Pres. Adj. Range MPa	Max. Flow L/min
UBGR-03-* -B-20	25	0.7 - 7.0	50
UBGR-03-* -H-20		3.5 - 25	
UBGR-06-* -20		0.7 - 25	125
UBGR-10-* -20		0.7 - 25	200

Unloading Relief Valves

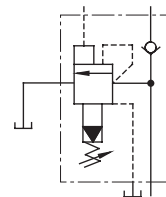
These valves are used to operate the pumps with minimum load in accumulator circuits or in high-low pump circuits.



Specifications

Model Numbers	Max. Operating Pres. MPa	Pres. Adj. Range MPa	Max. Flow L/min
BUCG-06-* *-30	21	B : 2.5 - 7.0	125
BUCG-10-* *-25		C : 3.5 - 14 H : 7.0 - 21	250

Graphic Symbol



———— For details about Brake Valves and Unloading Relief Valves, please contact us. ————